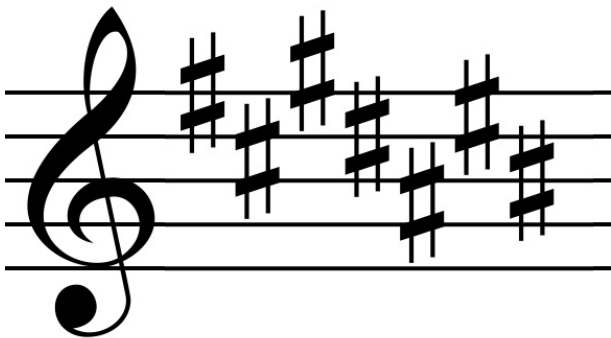
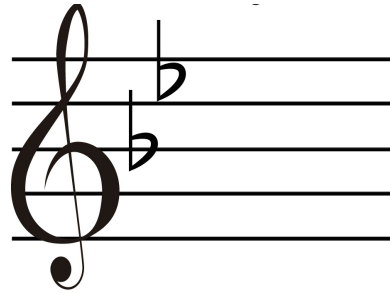
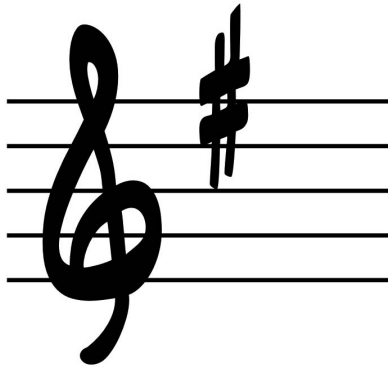


Key Signature



The key signature is the group of sharp or flat signs written at the beginning of each stave.

The positions of the sharp or flat signs tell us which notes need to be sharpened (raised by a semitone) or flattened (lowered by a semitone).

So, if there's an F# in the key signature, then all Fs are made into F#s!
... if there's a B \flat in the signature, then all Bs are made into B \flat s!

It is the key signature that tells us which 'key' the music is in ...
... and also saves a helluva lot of ink!